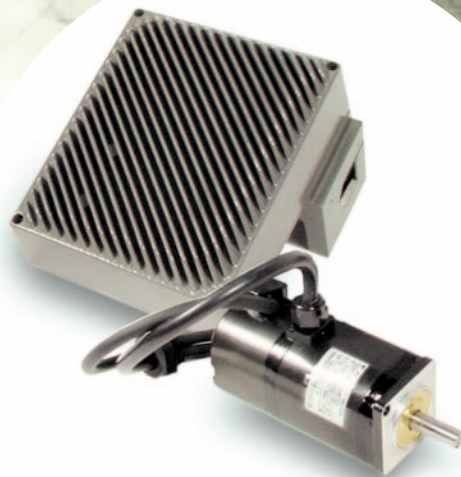
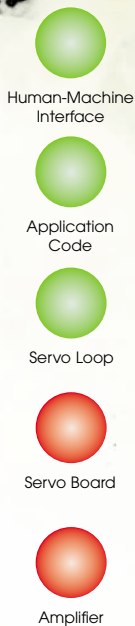


MotionBlox10

Single Axis Integrated Motion Controller and Amplifier



INTRODUCTION

The MotionBlox10 plugs straight into the servomotors. It includes the amplifier, the motion controller as well as the application code. The MotionBlox10 offers the best **modularity**, a significant amount of **CPU time** reserved for application code and is perfectly suited for **distributed control**.

Multiple MotionBlox10, Adept Technology robots as well as any other Cerebellum Automation product can be combined on a FireWire network to add more axes and extra features.

Open Architecture FireWire, Modbus, Profibus-DP, DeviceNET, Can-open, Interbus-S, AS-i.

DESCRIPTION

The MotionBlox10 solution is the global answer to distributed control motion applications.

- The easy to use Cerebellum Automation Integrated Development Environment running on a PC connected to the MotionBlox10 is used for setup, tuning and diagnostic, but is not mandatory for the application program execution.
- The application code is designed specifically for the target machine from Cerebellum Automation's top notch C libraries. It is **embedded** in the MotionBlox10 and runs on a Real Time Operating System. The standard industrial high-speed bus, FireWire, provides the synchronous communication required for coordinated motion and vision systems. The embedded soft IEC 61131 PLC gives the user the option to manage the automation logic of remote I/O.
- The servo loop can be entirely customized to handle non-linear mechanisms and optimize tracking, accuracy and cycle time.

SPECIFICATIONS

- Drives 3 phase AC brushless motors (up to 750W per motor)
- Absolute or incremental encoder input
- 200 MHz PowerPC Processor
- FireWire and 2 ports RS-232 connectivity
- 8 KHz servo loops with PID / Feed Forward
- Digital current loop
- 32 Digital Outputs, 32 Inputs (more over Field Bus)
- Embedded IEC 61131 PLC
- Supports FireWire, Modbus (standard) and Profibus-DP, DeviceNet, CAN-Open, Interbus-S, AS-i (options)
- Built-In Software Tool Box for servo tuning, system diagnostic and application program development
- Low Cost Vision with FireWire Cameras

cerebellum
automation